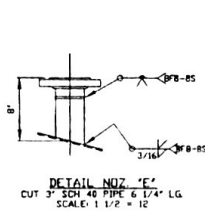
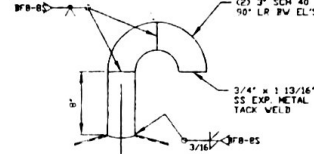


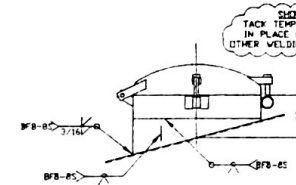
△ DETAIL BASE PLATE  
(4) REQ'D.  
MATERIAL: 1/2" THK. A36  
SCALE: 1 1/2" = 12"



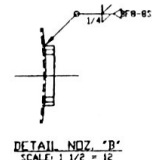
DETAIL NOZ. 'E'  
CUT 3" SCH 40 PIPE & 1/4" LG.  
SCALE: 1 1/2" = 12"



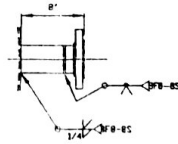
DETAIL NOZ. 'F'  
CUT 3" SCH 40 PIPE & 1/4" LG.  
SCALE: 1 1/2" = 12"



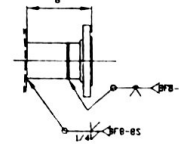
DETAIL NOZ. 'G'  
ROLL 3/8" THK. FL. EXTENSION TO 24" O.D.  
SEE ORIENT. VIEW FOR HINGE SIDE  
SCALE: 1" = 12"



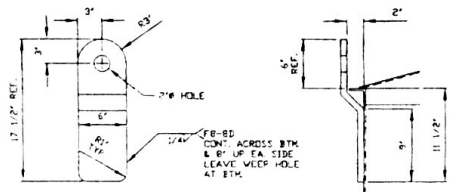
DETAIL NOZ. 'B'  
SCALE: 1 1/2" = 12"



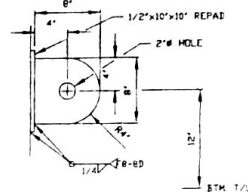
DETAIL NOZ. 'C'  
CUT 3" SCH 40 PIPE & 3/8" LG.  
SCALE: 1 1/2" = 12"



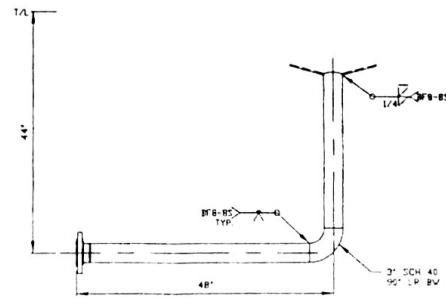
DETAIL NOZ. 'D'  
CUT 3" SCH 40 PIPE & 3/8" LG.  
SCALE: 1 1/2" = 12"



△ DETAIL LIFT LUG  
TWO REQUIRED  
TRAFFIC MGR. TO LOCATE  
3/4" THK. SA240-304  
SCALE: 1 1/2" = 12"



△ DETAIL TAILING LUG  
ONE REQUIRED  
TRAFFIC MGR. TO LOCATE  
1/2" THK. SA240-304 CLUC & REPAID  
SCALE: 1 1/2" = 12"



DETAIL NOZ. 'A'  
CUT (VERT.) 3" SCH 40 PIPE 28 1/2" LG.  
CUT (HORIZ.) 3" SCH 40 PIPE 41" LG.  
SCALE: 1" = 12"

08018  
CIE: ETHANOL  
Canton, Illinois  
09.04.07  
17.1 TS 3604  
File: 0180012023  
TS3601

CERTIFIED AS BUILT DRAWING  
KENNEDY TANK & MFG. CO., INC.  
INDIANAPOLIS, INDIANA  
BY: DLP DATE: 3/28/07

CERTIFIED PRINT CHECK

CHK. BY: *Wm. Schenkberg*

DATE: 9-6-07

LURGI, INC.



MATERIALS

ROOF:	3/16" THK. A240-304
SHELL:	3/16" (UPPER) & 1/4" (LOWER) THK. A240-304
BOTTOM:	1/4" THK. A240-304
FLANGES:	A105 GALV. (LU. FLGS.), A182-304
REPAIS:	N/A
NOZZLE NECKS (PIPE):	A312-304
NOZZLE NECKS (PLATE):	A240-304
WELD FITTINGS:	A403-304
VESSEL SUPPORT:	A992-50
STRUCTURAL:	4479-304, A36
BOLTS:	A307 ZINC PLATED
NUTS:	A307 ZINC PLATED
GASKETS:	1/8" NEDPRENE

DESIGN CONDITIONS

DESIGN PRESSURE (IN. W.C.):	10 INT./5 EXT.
AT DESIGN TEMP. (°F):	200
OPERATING PRESSURE (IN. W.C.):	ATM
AT OPERATING TEMP. (°F):	80
CORROSION ALLOWANCE:	NONE
LABEL:	KIT&M (PER ASME VIII & API 650 WHERE APPL.)
STRESS RELIEVE:	NONE
RADIOGRAPH:	NONE
JOINT EFF.:	.70
HYDRO TEST:	N/A
AIR TEST:	2-3 PSIG
CUSTOMER INSPECTION:	YES
MTR COPIES:	1 KIT&M, 1 CUSTOMER
NAMEPLATE FACSIMILE:	YES
SEISMIC & WIND DESIGN:	PER IBC 2003

WEIGHTS & CAPACITIES

EST. CAPACITY, GALS.	
PER FT. STRAIGHT SIDE:	309
TOTAL (TO TOP ANGLE):	6,276
SP. GR. OF CONTENTS:	1.19
EST. WT. OF CONTENTS (LBS):	62,287
EST. WT. OF VESSEL (LBS):	7,000
TOTAL EST. WT. (LBS):	69,287

FITTING SCHEDULE

NO.	SIZE	DESCRIPTION	REMARKS
A	1 3/4"	150#/L/SE/SCH 40	DISCHARGE
B	1 3/4"	150#/R/ STUD PAD	LEVEL
C	1 3/4"	150#/L/SE/SCH 40	RECIRCULATION
D	1 1/4"	150#/L/SE/SCH 40	OVERFLOW
E	1 3/4"	150#/L/SE/SCH 40	INLET
F	1 3/4"	SCH 40 PIPE	GOOSENECK VENT
G	1 24" x 17"	SWINGBOLT	TOP HANWAY

NOTES

- BOLT HOLES TO STRADDLE LINE PARALLEL TO 0°/180° AND 90°/270° CENTER LINES
- FABRICATOR SHALL PROVIDE GASKETS, BOLTS, AND HEX NUTS FOR ALL MATING PARTS INCLUDING BLIND FLANGES WHERE NOTED.
- ✓ INDICATES MACHINE FINISHED SURFACE.
- INSULATION SUPPORTS ARE NOT REQUIRED.
- FABRICATOR SHALL PROVIDE PROTECTIVE SHIELDS FOR ALL FLANGES AND OPENINGS.
- SHOP TOLERANCES DIMENSIONS & 1/8" NOZZLES & 1/2" BEGEE
- SANDBLAST: INTERNAL: NONE (POWER WASH) EXTERNAL: SS: BRUSH STARBLAST EXTERNAL: CS: SSPC-SP6
- LINING: NONE
- PAINT: ONE COAT INTERZING 22 AT 2-3 MILS DFT (CS ONLY)
- RADIUS WELDS & EDGES 1/8" MINIMUM.

FIELD FILE

KENNEDY TANK & MANUFACTURING CO. INC. 833 EAST SUMNER AVENUE, INDIANAPOLIS, INDIANA 46227	
REVISIONS	DESCRIPTION
NO. DATE BY	87" I.D. x 20' HGT S-S GLUCO AMYLASE TANK
12/11/06 DLP	FOR: LURGI PSI / CIE, INC. CANTON, IL
3/28/07 DLP	
DATE	DATE
DESIGNED BY: DLP	DATE: 1/2/07
CHECKED BY: DLP	DATE: 1/2/07
APPROVED BY: RMS	DATE: 1/2/07
DATE: MRA	DATE: 1/2/07
SCALE: 1" = 12"	SCALE: 1" = 12"
NO. 3604	NO. 6018-7328
SHEET 1 OF 1	